



PRODUCT CATALOGUE  
SPECIALITIES PRODUCTS

## AKRITI OCULOPLASTY LOGISTICS

**CORPORATE OFFICE:**

8-1-284/OU/232, OU Colony  
Shaikpet, Hyderabad - 500 008  
Andhra Pradesh, INDIA  
Care: +91-995 954 1995,+91-996 318 8447,  
Tel: +91-40-32443781, Fax: 91-40-23562729  
Email: [sales@akriti.co.in](mailto:sales@akriti.co.in)  
Web : [www.akriti.co.in](http://www.akriti.co.in)

**SALES OFFICE:**

6-3-927, Beside Shell Petrol Pump,  
Raj Bhavan Road, Somajiguda,  
Hyderabad - 500 082  
Andhra Pradesh, India  
Tele Fax: 91-40-42210407, +91-996 318 8447,  
Email: [hyderabad@akriti.co.in](mailto:hyderabad@akriti.co.in)  
Web : [www.akriti.co.in](http://www.akriti.co.in)

PUNCTAL PLUGS



**Item Name :** OPAQUE Herrick Lacrimal Plugs ® Non-dissolvable (L)

**Item Code :** 0010110

**Description :** Two individually packaged sterile plugs per box, with peel-off chart labels for accurate documentation, pre-mounted on disposable inserters. Blue color makes these patented OPAQUE plugs uniquely visible post-insertion with transillumination.



**Item Name :** Dissolvable OPAQUE Herrick Lacrimal Plugs ® (Medium)

**Item Code :** 0010111

**Description :** Medium-Term Occlusion Therapy (approximately 6 months) Two sterile plugs per box, packaged in a foil pouch to keep plugs soft, and peel-off chart labels for accurate documentation, jeweler's forceps required for insertion. Purple color makes these patented OPAQUE plugs visible post-insertion with transillumination.



**Item Name :** Dissolvable Collagen Plugs (Short-Term)

**Item Code :** 0010112

**Description :** Short-Term Occlusion Therapy (4-7 days) Ten packets per box, 6 plugs per packet. Jeweler's forceps required for insertion.



**Item Name :** The Herrick System™ Starter Kit

**Item Code :** 0010113

**Description :** Occlusion Therapy Starter Kit —Everything you need to get started! OPAQUE Herrick Lacrimal Plugs (1 pair each - 0.3mm, 0.5mm), Dissolvable Collagen Plugs (1 box each - 0.3mm, 0.4mm), Dissolvable OPAQUE Herrick Lacrimal Plugs (1 pair, 0.4mm), Lacrimal Dilator, TruPro™ Irrigating Cannula, 3 Disposable 3cc Syringes, #5-SA Jewelers Forceps, Williams Intracanalicular Plug Positioning Tool, Zone-Quick™ samples, Sterilization Tray, Symptoms Checklist Pad, Occlusion Therapy Poster, Dry Eye Brochures with Counter Display.

## SONIC BRITE EYE CLEANER



**Item Name :** SONIC BRITE ULTRASONIC CLEANER

**Item Code :** SB-001

**Description :** The SonicBrite® artificial eye cleaning system is the first of its kind! This new formula is tested effective and safe. The SonicBrite® artificial eye cleaning system removes calcium deposits, protein deposits, and bacteria from plastic artificial eyes and scleral shells in just 15 minutes at the touch of a button, all in the privacy of your own home.



**Item Name :** Refill For Ultrasonic Cleaner

**Item Code :** SB-002

**Description :** Our concentrated cleaner. Combine both, and you have a uniquely effective system that packs a buildup-blasting punch. The system is so powerful, your plastic artificial eye or scleral shell is clean, fresh, bacteria free, and ready to wear in just 15 minutes!

## SILICON BANDS, TIRES & SPONGES



**Item Name :** Silicon Bands, Tires & Sponges

**Item Code :** OH0031

**Description :** # Silicon Bands Style available - 240 (2.5mm), 41 (3.5mm), 42 (4mm) & 43 (5mm) # Silicon Tires Style available - 276,277,279,280,281 & 287 # Silicon Sponges Diameter available - 3.0mm, 4.0mm, 5.0mm & 6.0mm

## PUNCTAL PLUGS



**Item Name :** OPAQUE Herrick Lacrimal Plugs  
 ® Non-dissolvable (L)  
**Item Code :** 0010110  
**Description :** Two individually packaged sterile plugs per box, with peel-off chart labels for accurate documentation, pre-mounted on disposable inserters. Blue color makes these patented OPAQUE plugs uniquely visible post-insertion with transillumination.



**Item Name :** Dissolvable OPAQUE Herrick Lacrimal Plugs  
 ® (Medium Term)  
**Item Code :** 0010111  
**Description :** Medium-Term Occlusion Therapy (approximately 6 months) Two sterile plugs per box, packaged in a foil pouch to keep plugs soft, and peel-off chart labels for accurate documentation, jeweler's forceps required for insertion. Purple color makes these patented OPAQUE plugs visible post-insertion with transillumination.



**Item Name :** Dissolvable Collagen Plugs (Short-Term)  
**Item Code :** 0010112  
**Description :** Short-Term Occlusion Therapy (4-7 days) Ten packets per box, 6 plugs per packet. Jeweler's forceps required for insertion.



**Item Name :** The Herrick System™ Starter Kit  
**Item Code :** 0010113  
**Description :** Occlusion Therapy Starter Kit —Everything you need to get started! OPAQUE Herrick Lacrimal Plugs (1 pair each - 0.3mm, 0.5mm), Dissolvable Collagen Plugs (1 box each - 0.3mm, 0.4mm), Dissolvable OPAQUE Herrick Lacrimal Plugs (1 pair, 0.4mm), Lacrimal Dilator, TruPro™ Irrigating Cannula, 3 Disposable 3cc Syringes, #5-SA Jewelers Forceps, Williams Intracanalicular Plug Positioning Tool, Zone-Quick™ samples, Sterilization Tray, Symptoms Checklist Pad, Occlusion Therapy Poster,

Dry Eye Brochures with Counter Display.

**SPECILITY INSTRUMENTS**



**Item Name :** Silicon Oil Injector

**Item Code :** OH0023

**Description :** This instrument is used for controlled injection of the silicon oil into the eye with minimal efforts. The syringe filled with silicon oil is loaded onto the injector. Slow rotation of the handle pushes the syringe piston forward injecting the silicon oil in the eye.



**Item Name :** Rare Earth Intraocular Magnet

**Item Code :** OH0024

**Description :** This rare earth intraocular magnet is especially designed for the atraumatic removal of magnetic foreign bodies. The user friendly design and titanium body of the instrument helps in precise control during the surgery. The tips are available in three diameters ? 1.20mm, 1.60mm & 2.20mm



**Item Name :** Infusion Cannula (2.5mm, 4mm & 6mm)

**Item Code :** OH0025

**Description :** This is an ultra thinwall cannula (20 G) with 45 degree beveled tip along with a flexible silicon tubing. It is designed to provide more effective infusion than a regular wall cannula. The flexible tubing is 25 cm (10 in.) long and attaches to an infusion source. Both ends of the infusion cannula are strongly secured with the silicon tubing thereby making it an ideal instrument for silicon oil injection. Tips Sizes : 2.5mm, 4.0 mm & 6.0 mm



**Item Name :** Silicon Tip Cannula

**Item Code :** OH0026

**Description :** 1. Silicon tipped needle (straight / curved): 20 G stainless steel needle with a soft silicon tip for atraumatic removal of intraocular fluids. 2. Silicon brush needle (straight/curved) :20-G stainless steel needle with a soft silicon tip that is fenestrated to create a brush like quality. Useful for atraumatic brushing of the retinal surface with

## PRODUCT DESCRIPTION

simultaneous aspiration. May be useful for repositioning of retinal folds or breaks.



**Item Name :** Backflush Flute Needle with Silicon tip

**Item Code :** OH0027

**Description :** This instrument incorporates a silicon backflush reservoir onto the conventional flute needle, which helps in safe backflushing of the incarcerated tissue during aspiration of intraocular fluids. This instrument comes in a wide range of tips for specialized applications.

## EYE MODELS

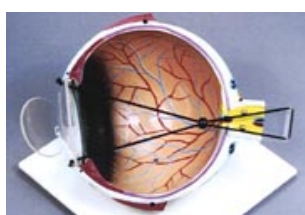


**Item Name :** Indirect Ophthalmoscopy Retinoscopy Model Eye

**Item Code :** OH00023

**Description :** For practice of indirect ophthalmoscopy and retinoscopy \* For practice of indirect ophthalmoscopy and retinoscopy \* Normal & abnormal retinal structure painted inside \* Variable power from +1 to -4 Diopters can be adjusted \* Astigmatism can be stimulated

## ANATOMICAL MODEL INDEX



**Item Name :** LASIK Anatomical Eye Model

**Item Code :** 15120

**Description :** Explanations of LASIK surgery are made clear and understandable for your patients with this LASIK. Anatomical Eye Model. This unique model of the human eye allows the Doctor or Technician to quickly and completely familiarize the patient with this procedure. The realistic 'flap' in the front of the model simulates the surgeon's incision. The model also facilitates demonstration of how acuity is improved as the result of the surgery. The LASIK Eye Model is made of durable plastic and measures 5 ¼ ' in diameter. This demonstration model show the eye in full color.



**Item Name :** Astigmatism Eye Model

**Item Code :** 15123

**Description :** Your explanations of Astigmatism (Myopia and Hyperopia) will be more easily understand by your patients with this Astigmatism eye model. This 6

times enlarged eye model demonstrates how the focal length of the eye affects vision and how it can be changed thru correction. Two cords and a bead can be used to realistically simulate either a myopic and a hyperopic foci. The model shows the eye in three layers: interior, exterior and central retina. It measures 5 ¼' in diameter. The model is made of durable plastic and shows the eye in full color.

**Item Name :** Intra Ocular Lens Eye Model

**Item Code :** 15149

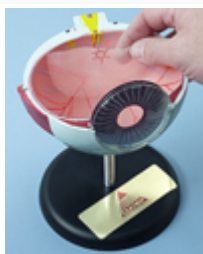
**Description :** The IOL Eye Model dramatically demonstrates how vision is restored after cataract removal. The six inter-changeable lenses simulate IOL and Toric implants of clear posterior capsule and post YAG posterior capsulotomy. The model shows a cross section of the eye in three layers; the retina, choroid, and sclera with veins and arteries. Made of plastic, the model measures 3 ¾' (9 cm) diameter. Mounted on a white opaque plastic base. Realistically colored and textured with the cornea, optic nerve and insertion of muscle are showing.



**Item Name :** Detachment Eye Model

**Item Code :** 15163

**Description :** Useful for explanations of Retinal detachment. Made of durable plastic and shows the eye in full color. It measures 5.25' in diameter. It is approximately 6 times the size of the human eye. Clear film helps illustrate the detachment.



**Item Name :** Corneal Eye Model

**Item Code :** 4851R

**Description :** Includes 4 interchangeable corneas that have the following conditions: Bullous Keratopathy, Fuch's Endothelial Dystrophy, Keratoconus and Recurrent Corneal Erosion. Model is made of hard, durable plastic and measures 3 ¾' in diameter. Mounted on a plastic base and the lenses are 2' in diameter. The model is realistically colored and textured and is designed primarily for patient education.



## PRODUCT DESCRIPTION



**Item Name :** Cataract Eye Model

**Item Code :** 4938R

**Description :** Oversized model includes interchangeable lens that show various types of cataract conditions including subcapsular, capsular, mature, critical and nuclear. Card highlights visual effects of cataracts. Size 5'x3'x4' (13x7.5x10 cm).



**Item Name :** Five Inch Eye Model

**Item Code :** 4939R

**Description :** Oversized model is 5x natural and shows inner anatomy including optic nerve, disc, macula, retina, central retinal artery, and vein. Lens and cornea are removable. Size 5'x3'x4' (13x7.5x10 cm). The information card is 6 1/2' x 5 1/4' (16.5x13 cm).



**Item Name :** Six Inch Eye Model

**Item Code :** 5125R

**Description :** Plastic molded eye is 6 times magnification. Disassembles into 7 parts including top, vitreous body, bottom section, 2-part lens, iris and cornea. Mounted on a stand. Detailed coloring. Size is 5' x 5' x 6'.