

**Akriti™**

## **Eyelid Gold Weight Implants For Facial Paralysis**



Figure-1 showing the exposure of eye cornea in Bells Palsy

### **Introduction**

Facial nerve supplies the muscles of the face that help closure of the eye as well as facial expressions. Paralysis of this nerve due to injury or brain surgery, can lead to incomplete closure of the eye. This poses a threat to the cornea, and can reduce vision in addition to cosmetic disfigurement.

This defect can be corrected with placement of a gold weight within the upper eyelid. The specially designed gold weight is fixed to eyelid structures below the skin, and is not visible on the surface. The appropriate weight is determined before surgery by performing a simple trial procedure described by Dr Naik.<sup>1</sup>

After surgery, the weight acts by gravity, thus closing the eyelid during relaxation (Figure 3). This gives a superior cosmetic result, and also protects the cornea.

### **Gold Weight Trial Procedure**

Gold weight trial procedure is best performed using the ready-to-use gold weight set. It is ideal to purchase an entire gold weight set, and use the same for the trial procedure. Once ideal weight is identified, it can be used for a given patient by sterilizing it, and replaced by placing an order.



Figure-2 Demonstration of Gold weight on Eye Lids

Trial procedure begins by pasting each gold weight onto the pre-tarsal part of the upper eyelid using the double-sided adhesive tape (Figure 2). Each time, palpebral fissure height and lagophthalmos is assessed while progressively increasing weights are used. The minimum weight that gives more than 50% reduction in lagophthalmos, but does not induce more than 2mm of ptosis should be used. A 0.2gm correction should be added to get the ideal weight.

### **Gold Weight Implant Surgical Steps**

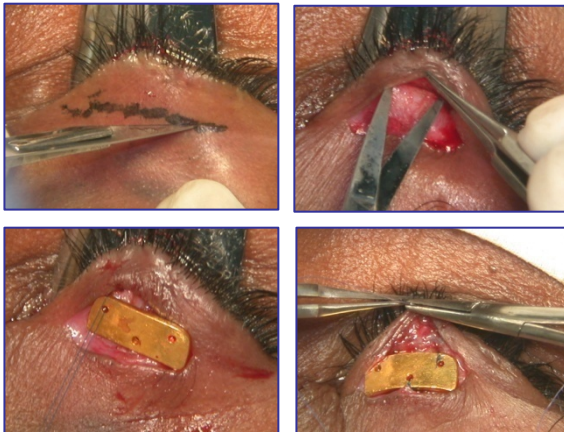


Figure 3: Surgeon's view of gold weight implant surgery

- ❖ Upper eyelid local anaesthesia is given.
- ❖ Eyelid crease incision is placed in the mid-pupillary line.
- ❖ Tarsus is exposed in the sub-orbicularis plane.
- ❖ Gold weight implant is centered, and sutured to the tarsus with 6-0 prolene sutures.
- ❖ Orbicularis and skin are closed in layers.

#### **Reference:**

Aggarwal E, **Naik MN**, Honavar SG. Effectiveness of the Gold Weight Trial Procedure in Predicting the Ideal Weight for Lid Loading in Facial Palsy: A Prospective Study. Am J Ophthalmol. 2007 Jun;143(6):1009-1012.

**Acknowledgement:** : All photographs courtesy Dr Milind Naik, L V Prasad Eye Institute, Hyderabad

**For Enquiries:**

**Akriti Oculoplasty Logistics**

ISO 9001: 2000 CERTIFIED COMPANY

8-1-284/OU/232, OU Colony, Shaikpet, Hyderabad, India

**Tel :** +91 40 2356 9138, 2356 9148, 3244 3781

**Fax :** +91 40 2356 2729, **Care:**+91 995 954 1995

**Email:** sales@akriti.co.in

**Web:** www.akriti.co.in