



PRODUCT CATALOGUE
GENERAL OPHTHALMOLOGY

AKRITI OCULOPLASTY LOGISTICS

CORPORATE OFFICE:

8-1-284/OU/232, OU Colony
Shaikpet, Hyderabad - 500 008
Andhra Pradesh, INDIA
Care: +91-995 954 1995,+91-996 318 8447,
Tel: +91-40-32443781, Fax: 91-40-23562729
Email: sales@akriti.co.in
Web : www.akriti.co.in

SALES OFFICE:

6-3-927, Beside Shell Petrol Pump,
Raj Bhavan Road, Somajiguda,
Hyderabad - 500 082
Andhra Pradesh, India
Tele Fax: 91-40-42210407, +91-996 318 8447,
Email: hyderabad@akriti.co.in
Web : www.akriti.co.in

GENERAL OPHTHALMOLOGY

ACUITY CARD INDEX

Near Point Acuity Tests



Item Name : Near Point Cards for AO And B&L Phoropter Refracto

Item Code : 4584

Description : Chart includes 12 charts: * 20/20 to 20/60 reading in 5 sizes * 20/80 to 20/200 Reading in 3 sizes * 20/60 to 20/200 in 4 lines * 20/20 to 20/50 letters in 5 lines * 20/60 letters in 1 line * 20/20 read letter by letter



Item Name : McClure Pediatric Test

Item Code : 4875

Description : McClure reading Chart has been specifically designed for children, including the very young. Reading difficulties have been segmented into 7 levels so the level can be matched with the child's capabilities. Within each level, optotypes are available in the sizes shown in the chart. The cards are intended for use at 14' (35cm) but the test also includes a page of letters for use at 20 feet (6M) for the convenience.



Item Name : Cardiff Near Point Card Set

Item Code : 4951

Description : Set includes two target cards, lion occluding glasses, matching card with large high contrast pictures. and instructions. Uses matching technique, not preferential looking. Covers 1 (20/200) (down to -0.3 (20/10) LogMAR in 0.1 LogMAR steps with 3 pictures per line. Use at 33mm (13'). For children 3-5 yrs and mentally impaired adults. Cards are 8' x 11' (20cm x 27cm) and laminated.

PRODUCT DESCRIPTION



Item Name : Low Vision Near Point Card

Item Code : 5066

Description : Holding Distance: 16 In. Snellen Acuity Range: 20/800-20/50 Printed in English

Contemporary Near Point Cards



Item Name : English Contemporary Near Point Card

Item Code : 11900

Description : This two-sided Contemporary Reading Card provides familiar reading exercises such as crossword puzzle, help wanted, football and basketball, music bar, calendar, playing cards, recipes, want ads, instructions, telephone white page listings, and TV listings. Continuous format reading examples provided for 20/160, 20/100, 20/80, 20/50, 20/40 and 20/30. Notation equivalents include Jaeger and point size. Card size is 8.5' x 11' (215 by 280 mm).



Item Name : Lebensohn Near Point Card

Item Code : 11901

Description : This two-sided Contemporary Reading Card was designed by James Lebensohn, MD and provides a full range of near point exercises including words, numbers and OX symbols. Optotypes include 20/80, 20/400, 20/260, 20/200, 20/100, 20/65, 20/50, 20/40, 20/30, 20/25, and 20/20. Notation equivalents include Decimal reading in English, Metric and Jaeger, point size and visual efficiency percentages. Card size is 8.5' x 11' (215 by 280 mm). Now printed on styrene for long life. Includes chain to maintain reading distance at 14' (35 cm)

PRODUCT DESCRIPTION



Item Name : Spanish Contemporary Near Point Card

Item Code : 4481

Description : This card provides an abundance of Spanish Language reading examples in order to insure that one is familiar to your patients. These include a song, train schedule, movie schedule, calendar, obituary, recipe and soccer schedule. In addition, the chart includes a reading examples for acuity levels at 20/30, 20/40, 20/50, 20/800, 20/100, and 20/160. Card is approx. 28cm x 22cm (8 ½' x 10 ½')



Item Name : Geriatric Near Point Card

Item Code : 4534

Description : Designed to be used by Nursing Home and Hospital workers to help evaluate a geriatric patient's need for a more thorough eye care exam . The test provides clear instructions and the targets to determine the patient's ability to function visually in 5 levels. When a referral is warranted, a list of key questions regarding general health to be forwarded. Size: 5' by 8' (12cm x 20cm) laminated

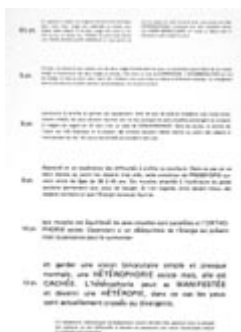


Item Name : SOSH Distance Low Vision Chart Set

Item Code : 4663

Description : Designed by the Student Optometric Service to Humanity Project with Paul Lobby OD and Robert Johnson OD These Low Vision charts have gained and excellent reputation since their introduction in 1969. The set includes: * Near Acuity Chart with 17 lines of numbers 20/200 to 20/20 * Two charts with one number per chart for 700, 600, 500, 400, 300 * Two charts with two numbers per chart for 220, * Two charts with three numbers per chart for 200, 180, 160, 140, 120, 100, * One chart with 4 numbers per line for 80, 60, and 50 * One chart with 5 numbers per line for 40 and 30 plus 6 numbers for 25 and 7 numbers for 20, 15 and 10

PRODUCT DESCRIPTION



Item Name : French and Spanish Reading Card

Item Code : 5285

Description : Reading Card in Spanish on one side and French on the other side. 6 levels, 4 1/2 through 12 point side. Washable plastic, 5-3/8'x 8'

Distance Charts



Item Name : ETDRS 4 Meter Charts

Item Code : 2121

Description : Translucent These charts work great either in the cabinet or hung on a wall! ETDRS Chart # 1 Right Eye, Translucent



Item Name : Landolt C Folding Chart

Item Code : 2205

Description : Notations for testing at 3 meters (10 ft.) Acuity range 30M to 1.5M (20/200, 6/60 to 20/10, 6/3 equiv.) Two smaller groups 7.5M to 1.5M for repetitive testing (20/50, 6/15 to 20/10, 6/3 equiv.) Measures 45.5 X 45.5 cm (18 X 18 in.) Folds to 45.5 X 23 cm (18 X 9 in.) Can be wall-mounted



Item Name : Lea Chart set

Item Code : 255000

Description : Lea Symbol Set. 9x14 (23x35.6 cm) 20/100 to 20/16, with response key, flash cards, and instructions. Use at 10 ft (3M).



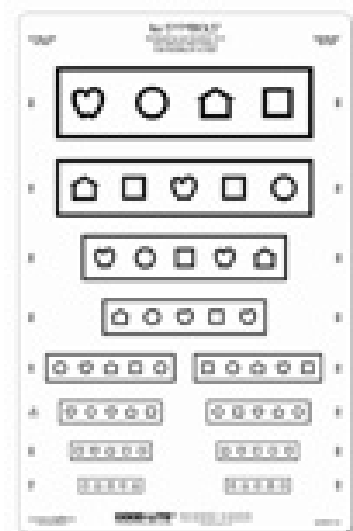
Item Name : Lea Chart Only
Item Code : 255001
Description : Lea Symbol Chart only. 9x14 (23x35.6 cm) 20/100 to 20/16, Use at 10 ft (3M).



Item Name : Lea Symbol 12 Line Translucent Chart Set
Item Code : 255100
Description : Lea Symbol Test Set. 12 Line Translucent Distant Chart Set. Complete set includes response key, flash cards and instructions



Item Name : Massvat Lea Symbol 10ft Distance Chart
Item Code : 259100
Description : Massvat Lea Symbol Distance Chart, for use at 10 ft, 20/80 to 20/16, size 9x14, for use with small illuminated cabinet, Complete set with response key, flash cards, and instructions



Item Name : Massvat Lea Symbols Distance Chart Set
Item Code : 259111
Description : Massvat Lea Symbols Distance Chart, for use at 10 ft and 20 ft, 20/80 to 20/16, size 9x14, for use with small illuminated cabinet, Complete set with response key, flash cards and instructions.



Item Name : Massvat 10 Line Lea Symbol 10ft Distance Chart
Item Code : 259500
Description : For use at 10 ft, 20/40 and 20/32 only size 3.5X9 Spiral - 4 pages, with response key, flash cards

Item Name : Massvat HOTV and Lea Symbols Distance Chart

Item Code : 259700

Description : For use at 10 ft, 20/40 and 20/32 only, size 10x10, cabinet, set with response card and key

Item Name : Lea Number Folding 10ft Distance Chart

Item Code : 271100

Description : Lea Numbers Folding Distance Chart for use at 10' (3M). Provides 15 Line Test for year olds and up. 18' x 20' (45.7 cm x 50.8 cm). Folds to 18' x 10' (45.7 cm x 25.4 cm). Has hole for hanging.



Item Name : Lea Numbers Single Number Book for 10ft

Item Code : 274000

Description : Lea Numbers Single Number Book for use at 10 Feet (3 M). Ideal for situations in which the child/adult cannot perform when tested with a line test. This book can help determine the best resolution of the visual pathway in a child or adult with amblyopia or impaired vision. Includes isolating mask and instructions. 13 pages, 5' x 5' (12.7 cm x 12.7 cm) .



Item Name : Directional 'E' Chart

Item Code : 4636

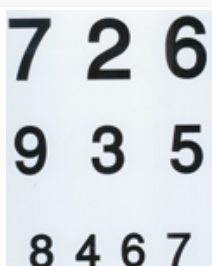
Description : This newly redesigned chart is made of 11'x18' high quality 0.30' styrene. Lines include 20/125, 20/100, 20/80, 20/60, 20/50, 20/40, 20/30, 20/25, 20/20, 20/15. Markings provided for 20 ft equivalent Snellen, 6 Meter and LogMAR. Rounded corners.



Item Name : Feinbloom Distance Low Vision Flip Chart

Item Code : 4895

Description : Feinbloom Distance Low Vision Flip Chart. Use at 10 ft. Covers 10/10 to 10/700, all numbers, laminated paper with vinyl spiral bound covers.





Item Name : ETDRS 10ft Chart # 1 for 2000 Cabinet
Item Code : 500010
Description : ETDRS Chart # 1 for 2000 cabinet, use at 10 ft (3M), 24.5x25.5 inches (62x65 cm), 20/200 to 20/10.



Item Name : ETDRS 10ft Chart # 2 for 2000 Cabinet
Item Code : 500011
Description : ETDRS Chart # 2 for 2000 cabinet, use at 10 ft (3M), 24.5x25.5 inches (62x65 cm), 20/200 to 20/10.



Item Name : ETDRS 10ft Chart # 3 for 2000 Cabinet
Item Code : 500012
Description : ETDRS Chart # 3 for 2000 cabinet, use at 10 ft (3M), 24.5x25.5 inches (62x65 cm), 20/200 to 20/10.



Item Name : Illuminated Cabinets and Charts
Item Code : 600000
Description : The Illuminated Cabinet is lightweight and versatile and uses 9'x14' translucent charts. It can be placed on a table, hung on a wall or put on a stand to accommodate accurate 10 to 20 foot visual acuity screening and testing. Housed in a durable metal cabinet, the Model A provides dependable service and has been the most popular cabinet of practitioners for over 25 years. Only 5 pounds! Uses F8T5D 8 watt fluorescent bulb. P/N 60600 Illuminated Cabinet differs slightly in that it has a storage compartment for extra charts in the back.



Item Name : HDTV Letter Chart
Item Code : 800726
Description : chart is similar to this photo

Item Name : Pre-school Remote Controlled Illuminated Cabinet
Item Code : 914000
Description : Pre-school Remote Controlled Illuminated Cabinet, LED Insta-line, wireless controlled, rechargeable power pack included, 14.5H x 9.25W x 5D inches. (Does not include charts, occluder or hyperopia glasses) 914000 Remote Controlled Illuminated Cabinet:- Remote Controlled Illuminated Cabinet, LED Insta-line, wireless controlled, rechargeable power pack included, includes Lea symbols, Lea Numbers, E, Letter, and HDTV charts plus occluder, +1.75, +2.25 and +2.50 hyperopia glasses. 14.5H x 9.25W x 5D inches. 915000 Remote Controlled Illuminated Cabinet, Insta-line:- Pre-school Remote Controlled Illuminated Cabinet, LED Insta-line, wireless controlled, rechargeable power pack included, includes Lea symbols, and HDTV charts plus occluder, 14.5H x 9.25W x 5D inches. 916000 Remote Controlled Illuminated Cabinet, LED Insta-line:-



Item Name : LED Non-Calibrated Cabinet with Remote
Item Code : ESV1018
Description : LED non-calibrated Professional 10x18 inch cabinet. Automatic 110 VAC. Measures 18.125' H x 10.125' W x 3' D, uses 10x18 inch (25.4 x 45.7 cm) charts. controlled by wireless remote.



Item Name : ETDRS Standard Illuminator and 3 ETDRS Charts
Item Code : ESV3000
Description : ETDRS viewing cabinet, self-calibrating, photopic (85 cdm²) and mesopic (3 cdm²) light testing, LED, Automatic 100 to 240 VAC. with customer provided plus (except US). with wireless remote. Chart storage in back. Measures 24.5' H x 25.5' W x 3.75' D (62 W cm x 65 H cm x 36 cm D)

OPHTHALMIC ACCESSORIES



Item Name : Clinical Trial Set

Item Code : OH00001

Description : Available with Wooden box, leather box, illuminated, non illuminated 2 pairs each cx and cc sph 20.00 pairs each cx and cc cyl 0.25 to 4.00 in 0.25 steps 0.25 tp 3.50 in 0.25 steps 4.50 to 6.00 in 0.50 steps 4.00 to 6.00 in 0.50 steps 7.00 to 14.00 in 1.00 steps prisms 16.00 to 20.00 in 2.00 steps 1/2.1,2,3,4,5,6,8,10,12 7 accessories : Maddox rod, stenopaic slit. Prinhole 2 blank discs, red glass, green glass.



Item Name : Aspheric Fundus Lenses VOLK

Item Code : OH00002

Description : These aspheric fundus lenses have established slit lamp indirect ophthalmoscopy as a standard diagnostic procedure for comprehensive fundus examination. The unique aspheric designs provide a very clear, wide angle fundus viewing ideal for static and dynamic fundoscopy.



Item Name : Exam Light, Woods Light 2 UV

Item Code : OH00014

Description : Burton Medical Ultraviolet (Woods) Light For Physician's Offices, Emergency Rooms, and Outpatient Facilities. Burton™ UV Lights are universally accepted for diagnosing disease and injuries to the skin and eye, including detection of corneal scratches. Exam Light, Woods Light 2 UV



Item Name : Exam Light, Woods Magnifier 2 UV 2 White

Item Code : OH00015

Description : Burton Medical Ultraviolet (Woods) Light with Magnifier For Physician's Offices, Emergency Rooms, and Outpatient Facilities. Burton™ UV Lights are universally accepted for diagnosing disease and injuries to the skin and eye.



Item Name : Trial frame

Item Code : OH00041

Description : Use for refraction, embed marking, fully metal, IPD can be adjusted in adult, while in children temples also can be adjusted



Item Name : PRISM BAR SET-HORIZONTAL & VERTICAL

Item Code : OH00043

Description : Use for evaluation of squint



Item Name : Handheld combo pinhole and occluder

Item Code : OH00044

Description : Versatile occluder suitable for both children and adults. Designed so patient can hold the occluder comfortable with long handle

MANNUAL LENSOMETER



Item Name : Lensmeter, Veatch Cosmos II Manual

Item Code : C-II

Description : The Veatch Cosmos II manual lensmeter is an external reading lensmeter with a prism compensator. The popular american style target provides easy and accurate readings of any lens from 30-90 mm in diameter.



Item Name : Lensmeter, ML-1 Manual

Item Code : ML-1

Description : The Reichert ML1 Manual Lensometer combines the traditional features you would expect, with innovative advantages, such as LED illumination and cord-free battery power.

OPHTHALMIC & OPTIC PRODUCTS



Item Name : TRIAL FRAME

Item Code : BV123

Description : Main Technical Indexes *Adjustment of Pupillary Distance: Two eyes' pupillary distance is 54 mm~70 mm, and adjustment of each grade requires change of 2 mm. *Axis graduation of calibrated dial: Left

and right calibrated dials are identical, where axis graduation line runs clockwise along axis graduation line of lens frame, 165°, ~0°, ~180° and ~25°, with distance of graduation line being 5°. *Inner pore diameter of lens frame: ϕ 34 mm *Number of lens that can be inserted into left and right lens frames at the same time: 4 pieces *Degree that lens rotates around optic axle inside lens frame: 360°



Item Name : TRIAL FRAME

Item Code : BV128

Description : Specifications & Operation Instructions:

Usages: It is suitable for spectacles shops, department of ophthalmology in hospitals, schools and enterprises to measure eyesight.



Item Name : PD METER

Item Code : BV156

Description : Specification: 1. Date range : Binocular PD: 46mm-82mm Monocular PD: 23mm-41mm
2. Distance range: 300-infinity ∞ 3. Indication error: =0.5mm or <0.5mm 4. Asymmetry error: =0.5mm or <0.5mm 5. Rounding error: =0.5mm or <0.5mm 6. Power Source: DC 6V (4 pieces AA batteries)



Item Name : PD METER

Item Code : BV158

Description : Specification: 1. Range of measurement: Pupillary distance of two eyes: 45mm-82mm Pupillary distance of the left and right eyes: 22.5mm-41mm 2. Working distance measuring grades: 30cm, 35cm, 40cm, 50cm, 65cm, 1m, 2m, ∞ 3. Indication error: =0.5mm or <0.5mm 4. Asymmetry error: =0.5mm or <0.5mm 5. Rounding error: =0.5mm or <0.5mm 6. Automatic shut-off: 1 minute after operation stops 7. Voltage: DC 6V

Item Name : TRIAL LENS SET

Item Code : BV202



Description : Specification: Character: Lenses with plastic and metal combi, rim. Not including trial frame. Spheres : 40 pairs each of concave and convex 0.25D to 6.00D in 0.25 steps 6.50D to 10.00D in 0.50 steps 11.00D to 15.00D in 1.00 steps 16.00D to 20.00D in 2.00 steps Cylinders : 20pairs each of concave and convex 0.25D to 6.00D in 0.25 steps 4.50D to 6.00D in 0.50 steps Prisms : 12 pieces 0.5(2) 1.0 to 10.0 in 1.0 steps Accessories : 14 pieces RF GF BL PL(2) MR(2) FL CL(2)PH (2) SS PF Crosscylinder x 0.25 x0.50

Item Name : TRIAL LENS SET

Item Code : BV206



Description : Specification: Character: Lenses with color plastic rim. Not including trial frame. Lens diameter is 22mm; Wooden case and wooden tray. Spheres : 40 pairs each of concave and convex 0.25D to 6.00D in 0.25 steps 6.50D to 10.00D in 0.50 steps 11.00D to 15.00D in 1.00 steps 16.00D to 20.00D in 2.00 steps Cylinders : 20pairs each of concave and convex 0.25D to 6.00D in 0.25 steps 4.50D to 6.00D in 0.50 steps Prisms : 12 pieces 0.5(2) 1.0 to 10.0 in 1.0 steps Accessories : 14 pieces RF GF BL PL(2) MR(2) FL CL(2)PH (2) PF Crosscylinder x 0.25 x0.50

Item Name : TRIAL LENS SET

Item Code : BV207



Description : Specification: Character: Lenses with silver rim, Not including trial frame. Spheres : 40 pairs each of concave and convex 0.25D to 6.00D in 0.25 steps 6.50D to 10.00D in 0.50 steps 11.00D to 15.00D in 1.00 steps 16.00D to 20.00D in 2.00 steps Cylinders : 20pairs each of concave and convex 0.25D to 6.00D in 0.25 steps 4.50D to 6.00D in 0.50 steps Prisms : 12 pieces 0.5(2) 1.0 to 10.0 in 1.0 steps Accessories : 14 pieces RF GF BL PL(2) MR(2) FL CL(2)PH (2) SS PF Crosscylinder x 0.25 x0.50



Item Name : TRIAL LENS SET

Item Code : BV215

Description : Specification: Character: Lenses with color metal rim, not including trial frame. Spheres : 40 pairs each of concave and convex 0.25D to 6.00D in 0.25 steps 6.50D to 10.00D in 0.50 steps 11.00D to 15.00D in 1.00 steps 16.00D to 20.00D in 2.00 steps Cylinders : 20pairs each of concave and convex 0.25D to 6.00D in 0.25 steps 4.50D to 6.00D in 0.50 steps Prisms : 12 pieces 0.5(2) 1.0 to 10.0 in 1.0 steps Accessories : 14 pieces RF GF BL PL(2) MR(2) FL CL(2)PH (2) SS PF Crosscylinder x 0.25 x0.50



Item Name : TRIAL LENS SET

Item Code : BV218

Description : Specification: Character: Lenses with silver and golden rim, Not including trial frame. Spheres : 40 pairs each of concave and convex 0.25D to 6.00D in 0.25 steps 6.50D to 10.00D in 0.50 steps 11.00D to 15.00D in 1.00 steps 16.00D to 20.00D in 2.00 steps Cylinders : 20pairs each of concave and convex 0.25D to 6.00D in 0.25 steps 4.50D to 6.00D in 0.50 steps Prisms : 12 pieces 0.5(2) 1.0 to 10.0 in 1.0 steps Accessories : 14 pieces RF GF BL PL(2) MR(2) FL CL(2)PH (2) SS PF Crosscylinder x 0.25 x0.50



Item Name : CROSS CYLINDER

Item Code : BV235

Description : Specification The Cross-Cylinder lens for refining astigmatism corrections. --Full diameter glass lens --long handle --silver metal rim --wooden case -- Diopters: -0.25, -0.50, -0.75,-1.00



Item Name : LENS RACK SET

Item Code : BV261

Description : Specification:40 pieces, plastic handle (nearsightedness, farsightedness half at each



Item Name : AUTO LENSMETER (Color LCD)

Item Code : BV559

Description : Specification: Sphere : 0 to $\pm 25D$ (0.01D, 0.12D, 0.25D steps) Cylinder : 0 to $\pm 10D$ (0.01D, 0.12D, 0.25D steps) Axis : 0-180°(1° steps)



Item Name : AUTO LENSMETER

Item Code : BV560

Description : Specification: Sphere : 0 to $\pm 25D$ (0.01D, 0.12D, 0.25D steps) Cylinder:0 to $\pm 10D$ (0.01D, 0.12D, 0.25D steps) Axis : 0-180°(1° steps)



Item Name : MANUAL LENSMETER (Exterior reading)

Item Code : BV561

Description : Specifications Ranges of diopter measurement 0 - $\pm 25D$ Minimum scale value 0.125D at 0 - $\pm 5D$ 0.25D at $\pm 5D$ - $\pm 25D$ Astigmatism axis of cylinder lens 0-180° Minimum scale value 5° Prism diopter at 1 Δ interval in the range of 0 - 5 Δ at 1 Δ interval in the range of 0 - 20 Δ Prism base angle 0-180° Minimum scale value 5° Regulation of ocular visibility $\pm 5D$ Size of lens $\varnothing 16mm$ - $\varnothing 80mm$ Lighting lamp 220V15W 110V15W



Item Name : MANUAL LENSMETER (Internal reading)

Item Code : BV562

Description : Specifications Ranges of diopter measurement 0 - $\pm 25D$ Minimum scale value 0.125D at 0 - $\pm 5D$ 0.25D at $\pm 5D$ - $\pm 25D$ Astigmatism axis of cylinder lens 0-180° Minimum scale value 5° Prism diopter at 1 Δ interval in the range of 0 - 5 Δ at 1 Δ interval in the range of 0 - 20 Δ Prism base angle 0-180° Minimum scale value 5° Regulation of ocular visibility $\pm 5D$ Size of lens $\varnothing 16mm$ - $\varnothing 80mm$ Lighting lamp 220V15W 110V15W

PRODUCT DESCRIPTION



Item Name : AUTO REFRACTOMETER

Item Code : BV611

Description : Specifications Measuring Range Spherical -
 20∞ +20D(VD=12)0.12steps Cylinder - 8∞ +8D
 0.12Dsteps Axis 0∞ 180°, 1°steps Pupil Distance 45∞
 85mm,1mm steps Vertex Distance
 0mm,12mm,13.75mm Min.Pupil Size Ø2.0mm Chart Auto
 fog Display 5.7" TFT LCD Print Thermal Printer Power
 Supply 100∞ 120v/ 200∞ 240v,50/60Hz

Item Name : PHOROPTER

Item Code : BV612

Description : Specifications: Sphere powers range:
 $+16.75$ D to -19.00 D,with minimum reading 0.25D or 0.12D
 (when+0.12D auxiliary lens or optional ± 0.12 D lens in use)
 $+26.75$ D to -29.00 D
 (when optional ± 10.00 D lens is in use) Cylinder power
 range:
 0 to -6.00 D,with minimum reading 0.25D or 0.12D
 (when auxiliary lens is in use)
 0 to -8.00 D
 (when -2.00 D auxiliary lens is in use) Astigmatic axis
 scale: 0 to 180° in 5° steps Cross cylinder:
 ± 0.25 D,reversal type
 (synchronized with astigmatic axis)
 ± 0.50 D optional Rotary prism: 0 to 20Δ D in 1Δ D step



Item Name : DIAGNOSTIC SET

Item Code : BV725

Description : Specification Halogen light for true tissue
 color and consistent, long-lasting illumination Apertures
 include large and small spot,semi-circle,and red-free filter
 Including Ophthalmoscope and Otoscope, with two handle
 Dust protection for maintenance free life Rubber brow rest
 prevents scratching of eyeglasses



Item Name : RETINOSCOPE(RECHARGEABLE)

Item Code : BV781



Description : Lithium battery ensure the long time operation and best performance Single control sleeve for vergence and rotation. Easy to operate, the powerful, bright bulb ensures easy recognition of neutralisation 100% Dustproof Housing Maintenance-free operation

Technical data

The lowest position gives a divergent beam
the highest position focuses the streak at a distance of about 25 cm in front of the retinoscope
Rated voltage:100VAC/240VAC
Input Power: 5VA
Bulb : 3.6V 2.6W, halogen

Item Name : OPHTHALMOSCOPE(RECHARGEABLE)

Item Code : BV825



Description : Specification Lithium battery ensure the long time operation and best performance

Halogen light for true tissue color and consistent, long-lasting illumination

Apertures include large and small spot,center-net,and red-free filter

Dust protection for maintenance free life

Rubber brow rest prevents scratching of eyeglasses

Technical data

The following correcting lenses range:

+in 1D steps |1-6 |8 |10 |12 |16 |20

- in 1D steps |1-6 |8 |10 |12 |16 |20|25

Large and small spot,center-net,and red-free filter

Bulb : 3.6V2.6W halogen bulb

Batteries : long life rechargeable lithium battery

Item Name : CHART PROJECTOR

Item Code : BV930



Description : Specification 1.Projection distance:2.0 to 7.0m 2.Projection enlargement rate:21.5(at 5m distance projection) 3.Tilting angle:5 degree each upwards and downwards from horizontal level 4.Light source:12V 30W 5.Automatically power off : 5 minutes,10 minutes or 15 minutes. 6.Power supply:10C-220V 50Hz

PRODUCT DESCRIPTION



Item Name : CHART PROJECTOR (Halogen lamp)

Item Code : BV932

Description : Specification: Projection distance : 1.5m ~ 6m
Projection magnification : 30 x (at 5m)



Item Name : CHART PROJECTOR (Cool light)

Item Code : BV935

Description : Specification: Projection distance : 1.5m ~ 6m
Projection magnification : 30 x (at 5m)



Item Name : Projector, Reichert Auto AP-250

Item Code : AP-250

Description : The Reichert AP250 Auto Projector is a remote-controlled, programmable, random-access, high-resolution, ophthalmic projector. The AP250 fits into almost any refracting environment.



Item Name : Projector Huvitz CDC-4000

Item Code : CDC-4000

Description : The Huvitz CDC-4000 Mirrored Chart is the future generation of visual acuity testing, overcoming the weakness of the chart projector. It provides accurate measurements by applying cutting-edge technology based in an ergonomic and compact design.



Item Name : Lensmeter Huvitz CLM-4000

Item Code : CLM-4000

Description : The CLM-4000 is the newest addition to Huvitz product line and features a color LCD screen. It quickly and easily measures a wide variety of lens type including difficult progressive style lenses. PD and UV transmission measurement is standard.



Item Name : Lensmeter Huvitz CLM-3100P (C)

Item Code : CLM3100P

Description : Measurement of progressive multi-focal lenses is fast and easy with the CLM-3100P auto-lensmeter. The data is represented in a simple to understand graphic display. PD measurement is a snap with the PD measurement bar.



Item Name : DRS-3100 Lite-CDC

Item Code : DRS-3100

Description : Huvitz DRS-3100 Lite-CDC The Huvitz Lite-CDC includes the CDR-3100 Digital Refractor as well as the CDC-4000 mirrored automatic projector. This package provides the ability to add digital refraction to an exam room with a foot print as small as 7' X 7'.



Item Name : DRS-3100 Lite-Sirius iMac Huvitz

Item Code : DRS-3100L

Description : Huvitz DRS-3100 Lite-Sirius Mac The Huvitz Lite-Sirius Mac includes the CDR-3100 Digital Refractor as well as the Sirius Visual Acuity System. This package provides the ability to add digital refraction to an existing exam room.



Item Name : DRS-3100 Huvitz Digital Refraction System

Item Code : DRS-3100S

Description : The Huvitz DRS-3100 Digital Refraction System offers the latest in state-of-the-art technology to speed up your refraction process.



Item Name : DRS-3100 Lite-CCP Huvitz Dig Ref System

Item Code : DRS3100

Description : Huvitz DRS-3100 Lite-CCP The Huvitz Lite-CCP includes the CDR-3100 Digital Refractor as well as the CCP-3100 automatic projector. This package provides the ability to add digital refraction to an existing exam room.



Item Name : Huvitz CCP-3100 Auto Projector

Item Code : OH00003

Description : The Huvitz CCP-3100 Auto Projector is designed as a stand alone automated instrument that adds the convenience of delivering eye charts to your patients via a programmable remote hand controller.



Item Name : Projector, Reichert Clear Chart

Item Code : OH00007

Description : The Reichert Clear Chart Digital Acuity System is an easy-to-use remote controlled acuity chart system. It features an all-in-one design that eliminates the need for a PC or additional components.



Item Name : Sirius Visual Acuity Software & Remote

Item Code : OH00008

Description : Software and Wireless Remote Package The Sirius Visual Acuity System places a wide range of acuity tests into one simple to use product. Sirius randomizes all optotypes to prevent memorization and provides a high technology addition to your exam room.



Item Name : Sirius Visual Acuity System iMac

Item Code : OH00009

Description : Macintosh iMac turn-key version The Sirius Visual Acuity System places a wide range of acuity tests into one simple to use product. Sirius randomizes all optotypes to prevent memorization and provides a high technology addition to your exam room.



Item Name : Projector, Haag-Streit Stimuli S2030

Item Code : S2030

Description : The Haag-Streit Stimuli S2030 is a refraction device that replaces the old technology, the automated projector. Stimuli eliminates the 'memory effect' by bringing virtually unlimited charts to the patient in a random manner.